



27 Combi - System

Surface-mount solutions

GEWISS



Ed. **01**
2018





27 Combi - System

REDESIGNED PROTECTION

PROTECTION

The robust and reliable enclosures of the 27 COMBI range are ideal for indoor and outdoor applications: with versions with IP40 protection for indoor contexts as well as watertight versions, with a door equipped with a transparent membrane (IP55) or a rigid door (IP65), for outdoor installations.

VERSATILITY

The enclosures are available in a wide range of sizes and modularities, both in the basic version as well as in multiple configurations, for vertical or horizontal assemblies. The extreme versatility of the 27 COMBI range also provides an option to select between empty enclosures (completely modular and customisable) and complete enclosures, which are already ready for installation.



27 COMBI, the complete and versatile system of wall-mounting enclosures and modular components, **has been refreshed** in the IP55 range, perfecting its characteristics of solidity and robustness. This update has not changed the **characteristic design** or the **compatibility** with any of the equipment in the **SYSTEM** range.

The new **27 COMBI** range is the ideal solution for all surface-mounting applications, indoors or outdoors, even in harsh atmospheric conditions.

RELIABILITY

The reliability of each product is guaranteed, with high quality materials, great design and thought that goes into every detail.

INTEGRATION

The enclosures in the 27 COMBI range can be perfectly integrated with all the devices in the SYSTEM range, which offers a wide selection of control devices, socket-outlets for power take-off (Italian and international standards), signal take-off, protective, signalling, regulation, climate control and alarm devices.



IP65

IP55 - IP65 watertight enclosures

The surface-mounting watertight enclosures in the 27 COMBI range, suitable for outdoor applications, include base enclosures (1 to 4 gangs), multiple vertical enclosures, (up to 12 gangs) and enclosures for the garden (pole head and pole arm), all able to house SYSTEM range devices. The water-tight enclosures are ideal for all applications that require maximum application versatility as well as a high level of resistance to all environmental conditions.

- **MORE RESISTANT MEMBRANE:** The shape and material of the front membrane on all enclosures have been redesigned for an improved feel and greater durability (including UV protection).
- **EASIER OPENING:** In the watertight version of the 27 COMBI enclosures, the door release mechanism has been improved with handle that's even more easy to open, and a more secure door-closing system.
- **REINFORCED DOOR:** In the entire range, the door ribbing has been strengthened in the areas subjected to greater stress.
- **IMPROVED DESIGN:** The front design of the 27 COMBI boxes has been improved with new, more resistant membrane and the reduction in space between the door and the enclosure.
- **IP55 GUARANTEED OVER TIME:** Thanks to the improved gasket seals, which adhere perfectly to the membrane, the enclosures of the 27 COMBI range are even more resistant to the penetration of dust and liquids.
- **HIGH PERFORMANCE SCREWS:** The enclosures of the range are equipped with stainless steel screws, with high resistance PH2 cross-heads, ideal for use in harsh atmospheric conditions.
- **VAST RANGE:** The 27 COMBI range also includes boxes that have rigid transparent lids (IP65 degree of protection) and watertight enclosures complete with SYSTEM modules, indicator lamps, electronic flashlights, movement detectors, buzzers and twilight switches.



Enclosures with IP40 protection

The 27 COMBI range includes surface-mounting enclosures with IP40 protection. The enclosures are divided in basic versions (1 to 4 gangs), horizontal multiple versions (up to 16 gangs) and vertical multiple versions (up to 12 gangs), all able to house SYSTEM range devices. The 27 COMBI products can be installed in any residential, commercial sector and industrial application.

- **HIGH MECHANICAL RESISTANCE:** The special structure of the enclosures and the high quality of the technopolymers guarantee high mechanical resistance to UV rays and chemical agents.
- **EASY INSTALLATION:** The modular enclosures are extremely easy to install, thanks to the considerable space left inside them for wiring.
- **IMPROVED CIRCUIT SAFETY:** In order to separate circuits with different voltages (e.g: power and signal), it is possible to subdivide the compartments in the individual enclosures using the specific functional elements.
- **INSTALLATION VERSATILITY:** The 27 COMBI range makes it possible to implement custom configurations by combining various enclosures to adapt them to every type of need.
- **HALOGEN-FREE MATERIALS:** To offer greater safety to people and property, the 27 COMBI enclosures are made using halogen-free materials (according to standard EN60754-2).
- **EASY THREADING:** The Ø23mm knockouts, distributed on all sides and on the back-mounting box, are optimised to make it easier to insert rigid conduits or cable glands, made with flexible polymer with quick entry to make cable threading easier.
- **EXPANDED RANGE:** The range also includes enclosures already complete with SYSTEM modules, complete devices with buzzers or surface-mounting or flush-mounting industrial socket-outlets.



COMBI-DIN enclosures

The 27 COMBI range also includes special COMBI-DIN enclosures with IP40 degree of protection. These devices make it possible to house, in a single 27 COMBI enclosure, both devices of the SYSTEM range (up to 16 gangs) as well as DIN rail devices (up to 8 modules).

- **ELEGANT DESIGN:** The presence of the rigid smoked transparent door, installed to protect the DIN rail modular devices, provides a touch of elegance to each enclosure in the range.
- **VERSATILE USE:** With options to include both DIN rail and SYSTEM products in the same enclosure, the COMBI-DIN enclosures are ideal for implementing smaller and more discreet electrical boards.
- **HALOGEN-FREE MATERIALS:** The COMBI-DIN enclosures are made using halogen-free materials (according to standard EN60754-2).

Combi 22 enclosures

The 27 COMBI range is completed with the COMBI 22 versions, surface-mounting watertight enclosures (IP66) with reinforced fronts for attaching push-buttons, controls, indicators and indicator lamps with a diameter of 22mm (1 to 12 operators). The COMBI 22 devices are suitable for controlling the operation status and for the actuation of multiple types of equipment, in particular in industrial and commercial sector environments.

- **SAFETY GUARANTEED:** Options include mushroom head emergency push-buttons with a hold mechanism, hold mechanism with a key, and a version without a hold mechanism, so the COMBI 22 enclosures guarantee a high safety standard for equipment and associated systems.
- **PRACTICAL AND VERSATILE:** The COMBI 22 offer is comprised of push-buttons, selectors and indicators (Ø 22mm) available in different colours and versions. The two-seat contact carrying flanges, supplied as standard, make it possible to implement a specific control logic for each system thanks to the NO or NC contacts with snap-in mounting.

Example of configurations available in the catalogue



GW 27 041

+



GW 20 571

=



GW 27 831



GW 27 002

+



GW 20 265

=



GW 27 814



GW 27 111

+



GW 74 361

=



GW 27 202

Example of possible configurations



GW 27 042

+



GW 20 589

=



GW 27 003

+



GW 20 503



GW 20 265

=



GW 27 071

+



GW 94 107



GW 20 265



GW 20 685

=



GW 27 102

+



GW 74 301



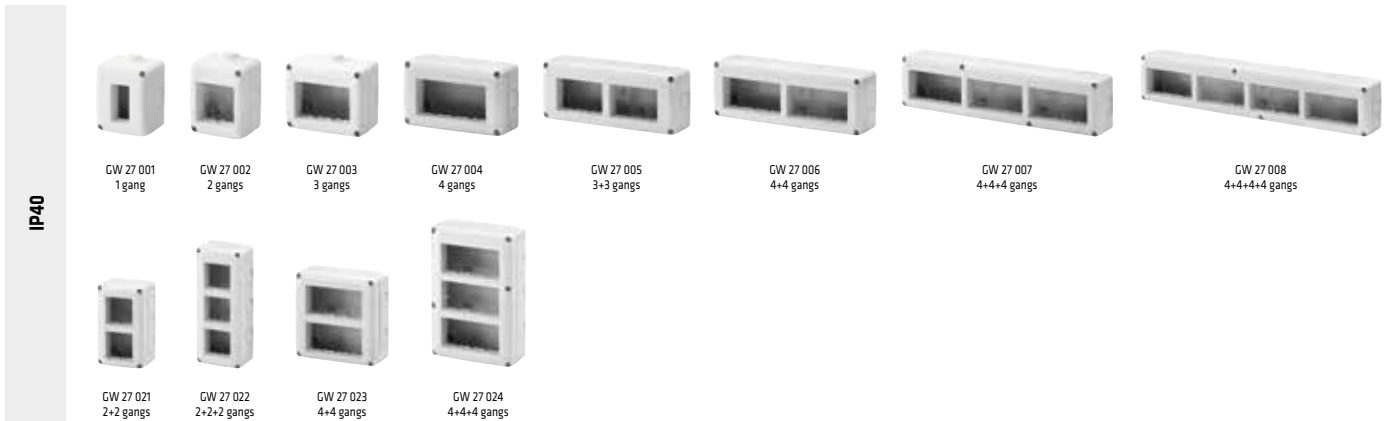
GW 74 367

=



27 Combi

COMBI SYSTEM 40 ENCLOSURES



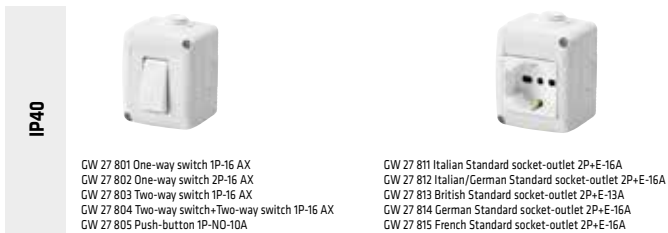
COMBI-DIN ENCLOSURES



ENCLOSURES FOR MINI TRUNKING USED AS SKIRTING AND FRAMING



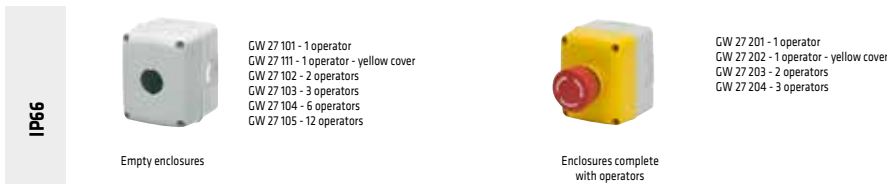
ENCLOSURES COMPLETE WITH SYSTEM DEVICES



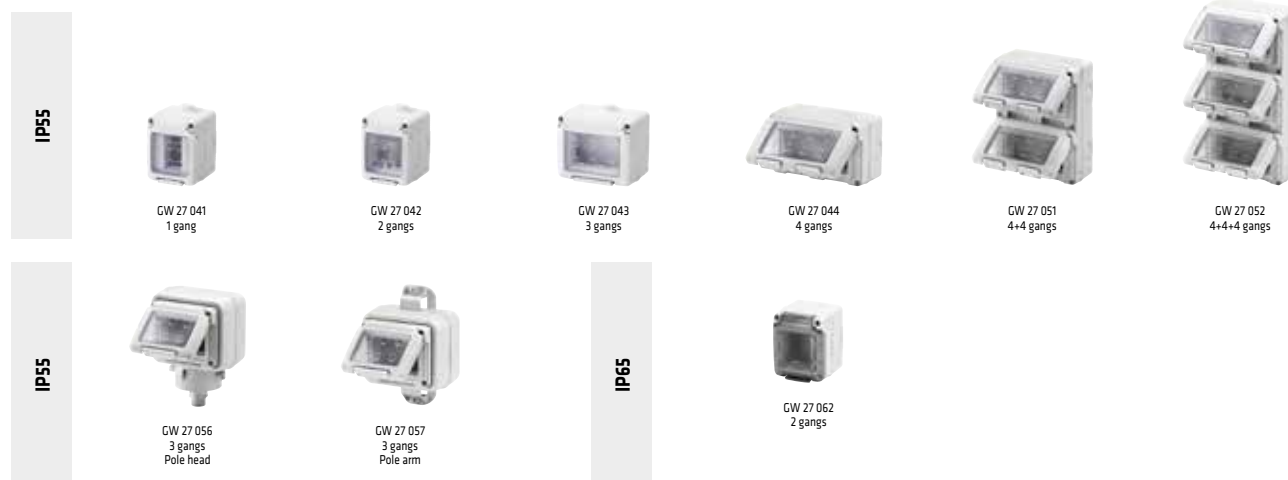
COMPLETE DEVICES



COMBI 22 ENCLOSURES FOR Ø 22MM OPERATORS

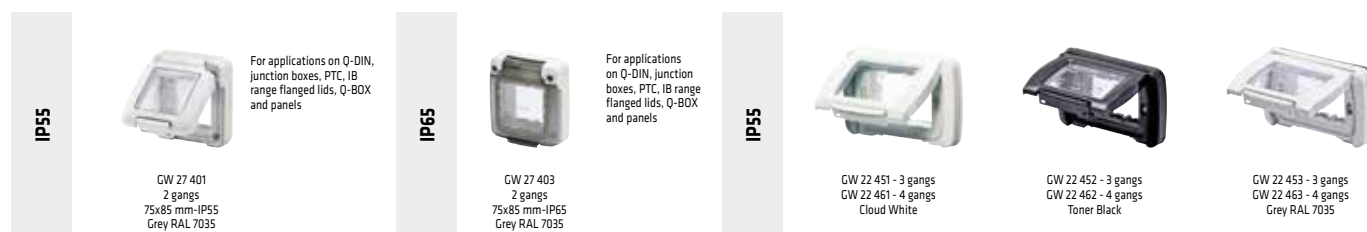


COMBI SYSTEM 55/65 ENCLOSURES



WATERTIGHT COVERS (for Q-DIN, Q-BOX)

WATERTIGHT PLATES (for rectangular flush-mounting boxes)



ENCLOSURES COMPLETE WITH SYSTEM DEVICES



COMPLETE DEVICES



COMPLEMENTARY ITEMS



System

COMMAND - SYSTEM

One-way switches														
	GW 20 571 1M-1P-16 AX	GW 20 572 1M-1P-16 AX Backlit 230V AC	GW 20 583 1M-1P-16 AX Unlit (*)	GW 20 503 1M-2P-16 AX	GW 20 504 1M-2P-16 AX Backlit 230V AC	GW 20 584 1M-2P-16 AX Unlit (*)	GW 20 005 1M-2P-10 AX With key	GW 20 585 1M-2P-25 AX For heavy duty loads						
	○ ●	○ ●	○ ●	○ ●	○ ●	○ ●	○ ●	○ ●						
	Two-way switches						Reversing switches							
		GW 20 576 1M-1P-16 AX	GW 20 577 1M-1P-16 AX Backlit 230V AC	GW 20 588 1M-1P-16 AX Unlit (*)	GW 20 008 1M-1P-10 AX With key	GW 20 589 2M-1P-16 AX Unlit (*)		GW 20 579 1M-1P-16 AX	GW 20 580 2M-1P-16 AX Unlit (*)					
		○ ●	○ ●	○ ●	○ ●	○ ●		○ ●	○ ●					
		Push-buttons												
			GW 20 510 1M-1P-NO-10 A	GW 20 515 Backlit 230V AC GW 20 516 Backlit 12/24V	GW 20 529 1M-1P-NO-10 A Unlit (*)	GW 20 531 1M-1P-NC-10 A Unlit (*)		GW 20 511 1M-1P-NO-10 A Key	GW 20 512 1M-1P-NO-10 A Bell	GW 20 513 1M-1P-NO-10 A Light	GW 20 514 1M-1P-NO-10 A Stair raiser light	GW 20 530 1M-2P-NO-10 A With key	GW 20 522 1M-1P-NO+NC-10 A Start	GW 20 523 1M-1P-NC+NO-10 A Stop
○ ●	○ ●		○ ●	○ ●	○ ●	○ ●	○ ●	○ ●	○ ●	○ ●	○ ●			
GW 20 520 1M-1P-NO+NO-10 A With interlock	GW 20 521 1M-1P-NO+NO-10 A With interlock		GW 20 519 1M-1P-NC-10 A	GW 20 517 1M-2P-NO-10 A	GW 20 591 2M-1P-NO-10 A With illuminated name plate (**)	GW 20 024 3M-1P-NO-10 A With illuminated name plate (**)	GW 20 527 2M-1P-NO-10 A Unlit (*)	GW 20 518 1M-2P-NO-10 A With pull-cord						
○ ●	○ ●		○ ●	○ ●	○ ●	○ ●	○ ●	○ ●						
Three-way switches					Miniature lamps		Cartridge lamps							
	GW 20 559 1M-1P-10 AX Positions 1-0-2		GW 20 528 1M-1P-10 AX Positions 1-0-2	GW 20 560 1M-2P-10 AX Positions 1-0-2		GW 10 893 12/24V AC/DC GW 30 943 230V AC GW 30 944 230V AC GW 30 946 110/230V AC GW 30 947 110/230V AC		GW 20 902 56x36 12V AC/DC GW 20 903 56x36 24V AC/DC GW 20 904 56x31 12V AC/DC GW 20 905 56x31 24V AC/DC GW 20 906 56.3x28 110/230V AC GW 20 908 56.3x28 110/230V AC						
	○ ●		○ ●	○		White Red Green Light blue White		White White White White Red Green						
Lenses with illuminated symbol														
	GW 20 533 Neutral		GW 20 537	GW 20 538	GW 20 539	GW 20 549	GW 20 550	GW 20 551	GW 20 595	GW 20 561	GW 20 562	GW 20 563	GW 20 564	GW 20 565
		GW 20 540	GW 20 542	GW 20 592	GW 20 593	GW 20 596	GW 20 597	GW 20 594	GW 20 566	GW 20 567	GW 20 568	GW 20 569	GW 20 570	
		General services			Technical services				Numerical services					
	Infrared	Relay						Blanking modules and cable output						
			GW 20 821 Motion detector 1M-INO-3 A	GW 20 071 Step-step 1M-1P-10 A-250 V AC	GW 20 072 Step-step 1M-2P-10 A-250 V AC	GW 20 074 Monostable 1M-1P-10 A-250 V AC-INO/NC	GW 20 076 Call 1M-1P-NO/NC-12 V AC/DC		GW 20 056 1M	GW 20 073 2M	GW 20 058 1M Cable output			
			○ ●	○ ●	○ ●	○ ●	○ ●		○ ●	○ ●	○ ●			

Selection of System range components, available in white and black.
For the complete range, refer to the currently valid catalogue or www.gewiss.com

○ White (GW 20 XXX)

● Black (GW 21 XXX)

(*) Supplied without miniature lamp unit.

(**) Supplied without cartridge lamp unit.

POWER TAKE-OFF - SYSTEM

Italian	GW 20 201 2P+E-10A-250V AC ○ ●	GW 20 203 2P+E-16A-250V AC Dual amperage ○ ●	GW 20 295 2P+E-16A-250V AC Dual amperage	GW 20 281 2P+E-16A-250V AC Dual amperage	GW 20 286 2P+E-16A-250V AC Dual amperage	GW 20 291 2x2P+T-16 A-250 V AC Dual amperage ○ ●				
Italian/German	GW 20 205 2P+E-16A-250V AC ○ ●	GW 20 246 2P+E-16A-250V AC Dual amperage ○ ●	GW 20 296 2P+E-16A-250V AC Dual amperage	GW 20 282 2P+E-16A-250V AC Dual amperage	GW 20 287 2P+E-16A-250V AC Dual amperage	Swiss GW 20 351 2P+E-10A-250V AC Type 12 ○ ●				
German	GW 20 265 2P+E-16A-250V AC ○ ●	GW 20 297 2P+E-16A-250V AC	GW 20 283 2P+E-16A-250V AC	GW 20 288 2P+E-16A-250V AC	French	GW 20 206 2P-16A-250V AC ○ ●	GW 20 207 2P+E-16A-250V AC ○ ●	GW 20 312 2P+E-16A-250V AC		
British	GW 20 208 2P+E-13A-250V AC ○ ●	GW 20 209 2P+E-16A-250V AC ○ ●	Australian	GW 20 357 2P+E-10A-250V AC ○ ●	GW 20 356 2P+E-15A-250V AC ○ ●	Euro-American/USA	GW 20 212 2P+E-10/15A-250/125V AC ○ ●	GW 20 214 2P+E-15A-125V AC ○ ●	GW 20 216 2P+E-15A-250V AC ○ ●	
Argentinian	GW 20 248 2P+E-10A-250V AC ○ ●	Israeli	GW 20 220 2P+E-16A-250V AC Unlit (*) ○ ●	GW 20 298 2P+E-16A-250V AC Unlit (*)	GW 20 299 2P+E-16A-250V AC Unlit (*)	GW 20 320 2P-10A-250V AC ○ ●	Special socket-outlets	GW 20 239 SELV 2P-6A-24V ○ ●	GW 20 234 SELV 2P-6A-24V Polarised ○ ●	GW 20 241 For loudspeaker

SIGNAL TAKE-OFF - SYSTEM

TV-SAT	F female GW 20 391 - 0 dB GW 20 396 - 5 dB GW 20 392 - 10 dB GW 20 393 - 14 dB ○ ●	IEC male GW 20 381 - 0 dB GW 20 386 - 5 dB GW 20 382 - 10 dB GW 20 383 - 14 dB ○ ●	IEC female GW 20 228 - 0 dB GW 20 229 - 20 dB GW 20 230 - Term. 20 dB ○ ●	GW 20 277 Terminal resistance 75 ohm ▲	Telephone socket-outlets	GW 20 251 RJ11 ○ ●	GW 20 235 French - 8 contacts ○ ●	GW 20 272 British - 6 contacts ○ ●		
Data socket-outlets	RJ45 - UTP GW 20 685 Cat. 6 GW 20 684 Cat. 6 GW 20 271 Cat. 5e ○ ●	RJ45 - FTP GW 20 686 Cat. 6 GW 20 243 Cat. 5e ○ ●	Adapters GW 20 266 IBM GW 20 267 SYSTIMAX Commscope GW 20 270 AMP/Keystone Jack ○ ●	GW 20 237 BNC 50/75/93 ohm ○ ●	GW 20 238 Unwired enclosure for SUB-D 9/15/25 PIN ○ ●	USB and HDMI couplers	GW 38 056 HDMI coupler	GW 38 057 USB coupler	USB power supply	GW 20 361 USB double power supply ○

Selection of System range components, available in white and black.
For the complete range, refer to the currently valid catalogue or www.gewiss.com

(*) Supplied without miniature lamp unit.

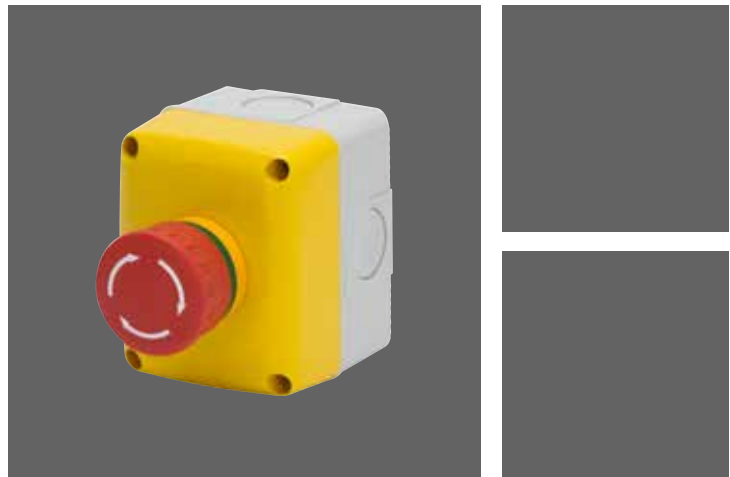
○ White (GW 20 XXX)

● Black (GW 21 XXX)



GEWISS

Visit www.gewiss.com and follow us on:



GEWISS S.p.A.

Registered Office: Via A. Volta, 1
24069 CENATE SOTTO BG - Italy
T. +39 035 946 111 - F. +39 035 945 222
gewiss@gewiss.com - www.gewiss.com

Sole Shareholder company - Bergamo Register of Companies / VAT/Tax Code (IT) 00385040167
REA 107496 - Share capital 60,000,000.00 EUR fully paid up.

PB 22484 EN - 06.18

